



JIGGERS

Tecnologie per la tintura dei tessuti in largo
Technologies for open width fabric dyeing

美加尼-美赛拉
卷染机-平幅织物染色技术

WE  REGGIANI

纺织品改革先驱

卷染机

平幅织物染色技术



VGCE 300

样品 - 丝 - 衬里 / Sampling - Silk - Linings

驱动系统 / Drive system: 电子 / electronic

卷布辊最大直径 / Max roller batch diameter: 300 mm

最大速度 / Max speed: 30 m/min

最少-最多染液量 / Min-Max liquor content: 10 - 35 l/m width



VGFE 500

丝 - 衬里 - 小卷装 / Silk - Linings - Small batches

驱动系统 / Drive system: 电子 / electronic

卷布辊最大直径 / Max roller batch diameter: 500 mm

最大速度 / Max speed: 80 m/min

最少-最多染液量 / Min-Max liquor content: 95 - 165 l/m width



VGOE 800

衬里和中卷装 / Linings and Medium Batches

驱动系统 / Drive system: 电子 / electronic

卷布辊最大直径 / Max roller batch diameter: 800 mm

最大速度 / Max speed: 120 m/min

最少-最多染液量 / Min-Max liquor content: 120 - 315 l/m width



VGME 1050

中卷装 / Medium Batches

驱动系统 / Drive system: 电子 / electronic

卷布辊最大直径 / Max roller batch diameter: 1050 mm

最大速度 / Max speed: 150 m/min

最少-最多染液量 / Min-Max liquor content: 220 - 515 l/m width



VGJE 1400

大卷装 / Large Batches

驱动系统 / Drive system: 电子 / electronic

卷布辊最大直径 / Max roller batch diameter: 1400 mm

最大速度 / Max speed: 150 m/min

最少-最多染液量 / Min-Max liquor content: 290 - 600 l/m width

Technologies for open width fabric dyeing



HT Celsius 500 高温聚酯染色机

PES 染色 / PES dyeing

驱动系统 / Drive system: 电子 / electronic

卷布辊最大直径 / Max roller batch diameter: 500 mm

最大速度 / Max speed: 80 m/min

最少-最多染液量 / Min-Max liquor content: 95 - 165 l/m width



HT Celsius 800 高温聚酯染色机

PES 染色 / PES dyeing

驱动系统 / Drive system: 电子 / electronic

卷布辊最大直径 / Max roller batch diameter: 800 mm

最大速度 / Max speed: 120 m/min

最少-最多染液量 / Min-Max liquor content: 120 - 315 l/m width



HT Celsius 1050 高温聚酯染色机

PES 染色 / PES dyeing

驱动系统 / Drive system: 电子 / electronic

卷布辊最大直径 / Max roller batch diameter: 1050 mm

最大速度 / Max speed: 150 m/min

最少-最多染液量 / Min-Max liquor content: 120 - 430 l/m width



HT Celsius 1300 高温聚酯染色机

PES 染色 / PES dyeing

驱动系统 / Drive system: 电子 / electronic

卷布辊最大直径 / Max roller batch diameter: 1300 mm

最大速度 / Max speed: 150 m/min

最少-最多染液量 / Min-Max liquor content: 140 - 470 l/m width

卷染机 平幅织物处理技术

间歇式处理平幅织物

拥有超过60年的生产经验以及上千名机械前辈，美赛拉处于理想的位置为所有需求者提供一系列的卷染机，从最小的小样卷染机到大型机器，涵盖了所有尺寸。美赛拉卷染机是在此领域长期实践经验的成果。

驱动系统

卷染机配备了两个独立的变速电动机，由交流矢量变频器独立控制。

速度调节

电路采用高分辨率编码器调整速度。这确保根据布匹直径变化进行精确调整。

张力控制

所需张力根据织物规格通过PLC（控制器）设定，测力传感器处于染槽下面的后罗拉上，测量织物的实时张力并将信号反馈到PLC，将设定值与测量值进行比较，若有不同，可以通过变频器由同步交流电机立即设置为零。

这个过程是完全自动的，并且系统针对周期内的张力波动提供了一种快速、准确的补偿装置。因此，织物张力允许纤弱织物（包括双向拉伸）在整个周期内保持相同水平。

Dis-continuous treatment of open-width fabrics

With over 60 years experience and thousands of machines sold throughout the world, Mezzera is in the ideal position to supply a range of jiggers for all needs, from the smallest jigger for sampling to the jumbo machine including all intermediate sizes. The Mezzera jiggers are the outcome of the long experience acquired working on the field.

Drive system

The jigger is equipped with two separate electric motors with variable speed driven by independent AC vectorial inverters.

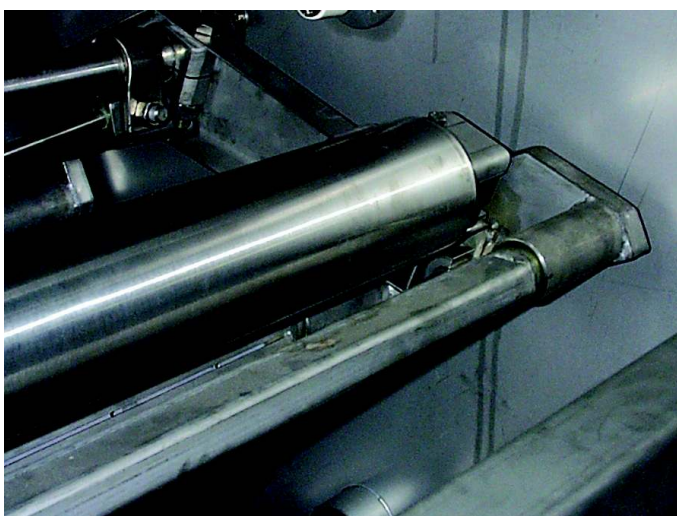
Speed adjustment

The circuit that controls the speed uses a high resolution encoder. It ensures accurate adjustment despite the change in the diameter of the fabric roll.

Tension control

The required tension can be set in the PLC accordingly to the fabric specifications. The load cell, positioned on the back-roller under the liquor, measures in real time the tension applied to the fabric and sends a feedback signal to the PLC; set value and measured value are compared and the difference, if any, is immediately set to zero synchronizing the A.C. motors through the inverters.

That is done automatically and this system provides a very fast and accurate compensation of any tension fluctuation which may occur during the cycle. Thus, tension applied to the fabric permits to process delicate fabrics (including bi-stretch) with the same tension all over the cycle.



Technologies for open width fabric dyeing

平衡器

纤弱织物在处理时，对于施加的张力非常敏感，中央摇臂积极使用驱动平衡器，同时中等厚度织物采用振荡平衡器。这两种方法完美地帮助织物卷绕到卷取罗拉上。

溶液循环式加热

溶液循环单元由一个泵、两根管道，一个输入管和一个输出管组成，安装在主液箱的底部。
溶液循环单元采用始终保持液体流动的设计，这样可以使化学物质完全混合，确保完美均匀的染色。
直接加热系统和间接加热系统都是以染缸里的蒸汽管为基础，保证了快速控制温度，减少加工时间和蒸汽损耗。外置热交换器在需要时可配置。
化学产品准备在外面的液体箱内，其有直接加热线管道，一个循环洗涤管，过滤器和一个流量开关阀门。

洗涤和冲洗

一种特殊设计允许逆向式洗涤和冲洗，保证了有效的洗涤效果和明显降低水消耗量的优势。
洗涤效果得益于双头喷水管（处于旋转操纵杆的两边）产生的一个高效洗涤效果的水叶片。

染色工艺的控制系统

基于先进的PLC技术的控制系统安装于防水箱内。这个单元由人机控制板控制，附有触摸屏，允许工作循环保存到PLC，任何时候都可以恢复和执行。

Equalizer

When treating delicate fabrics, thus very sensitive to the applied tension, a central equalizer swing arm, positively driven, is used, whereas for medium-heavy fabrics an oscillating equalizer is applied. Both solutions perfectly aid the fabric to be rolled /unrolled onto the winding rollers.

Liquor circulation- heating

The liquor circulation unit consists of a pump and two pipes, one suction pipe and one delivery pipe, positioned at the bottom of the main tank. The liquor circulation unit has been designed to keep treatment liquor flowing all times, so that the chemical products are perfectly mixed together and to ensure a perfect and uniform dyeing. Both direct and indirect heating system, based on a steam pipe inside the vat, ensures fast temperature control, saving production time and steam consumption. The external heat exchanger is also available on demand.

The chemical products are prepared in an external tank which has its own direct heating pipeline, a circular washing pipeline, filter and a discharge on/off valve.

Washing and rinsing

A special technical execution permit to wash and rinse in countercurrent, ensuring an effective washing action with significant advantages in terms of water consumption.

The washing effect is increased also thank to a twin set of spray pipes (positioned on each side of the swing lever) to generate a blade of water with an efficient washing effect.

Control system of dyeing process

The control system is based on a state-of-the-art PLC installed in a watertight cabinet. This unit is controlled from an ergonomic control panel with touch screen that allows to save the working cycle, into the PLC, recall and execute the cycles whenever is necessary.

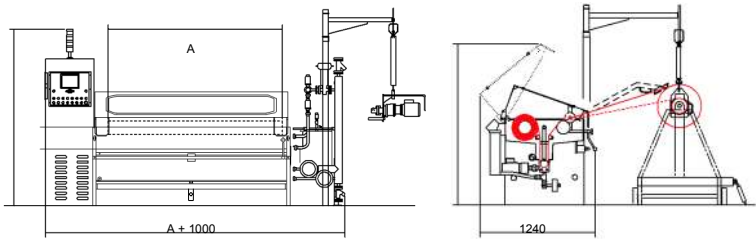


卷染机

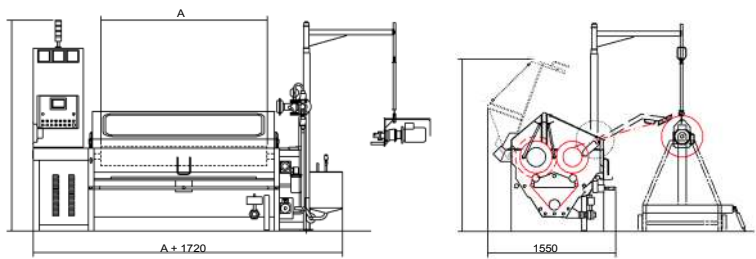
平幅染色技术

技术数据 / *Technical data*

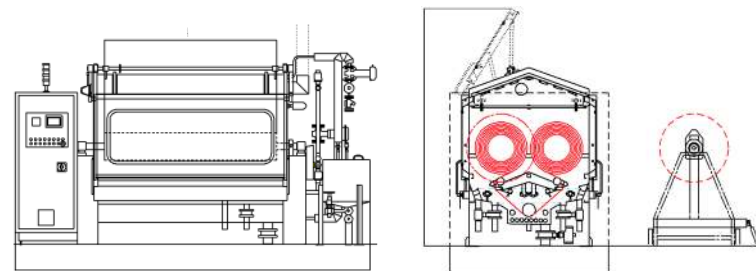
VGC-E 300



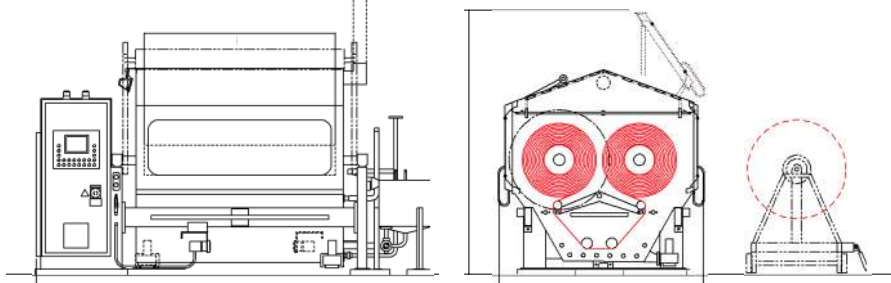
VGf-E 500



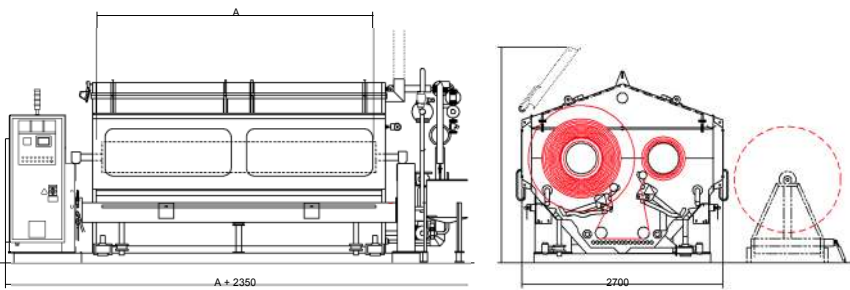
VGO-E 800



VGM-E 1050



VGJ-E 1400



	辊筒幅宽 (A) mm	染槽最小/最大 容量 (lxm)	装机功率 (kW)	织物速度 (m/min)	织物张力 (kgf)	最大长度 (mm)	最大宽度 (mm)	最大高度 (m)
	Roller width (A) mm	Tank capacity min/max (lxm)	Installed power (kW)	Fabric speed (m/min)	Fabric tension (kgf)	Max length (mm)	Max width (mm)	Machine height (m)
VGC-E 300	1400 -2400	10 - 35	1,5	30	5-40	A+1000	1240	1865
VGf-E 500	1400-2400	95 - 165	6	80	5-40	A+1720	1550	2090
VGO-E 800	1400-2800	120 - 315	10	120	5-50	A+2130	1860	2790
VGM-E 1050	1400-3800	220 - 515	12	150	5-60	A+2075	2200	2750
VGJ-E 1400	2000-3800	290 - 600	16,8	150	5-60	A+2350	2700	2770

Technologies for open width fabric dyeing

HT JIGGER 高温卷染机

新一代的压力器用于高温染色的卷染机

凭借四十年的生产经验以及最先进的生产技术，美赛拉公司的生产线拥有最先进的卷染机的设计和生产。

卷染机提供4种规格：500，800，1050或1300 mm（卷布辊的最大直径）

混色染色质量安全温度高达143℃。

卷染机配备了两台可变速电动机，分别由矢量变频器单独控制。织物的张力由这两台同步电动机控制。生产过程中的张力由测力传感器控制，其安装于液箱底部的两个滚筒上。

摇杆设计在于获得免折痕染色，特别是针对纤弱织物。

液箱，是不锈钢，设计的操作方法用于达到最高的水洗效率。卷染机配置了一种轴向织物卸载机制。为了确保织物卷绕更容易、无褶皱或者折痕，机器上安装了固定的织物伸展棒和空转的导向罗拉。

THE LAST GENERATION OF PRESSURED JIGGERS FOR HIGH TEMPERATURE DYEING

The forty years of manufacturing experience together with the highest production technology have led to design and to product the most recent jigger in the Mezzera production line.

The jigger is available in four versions: 500, 800, 1050 or 1300 mm as maximum diameter of the winding fabric rollers.

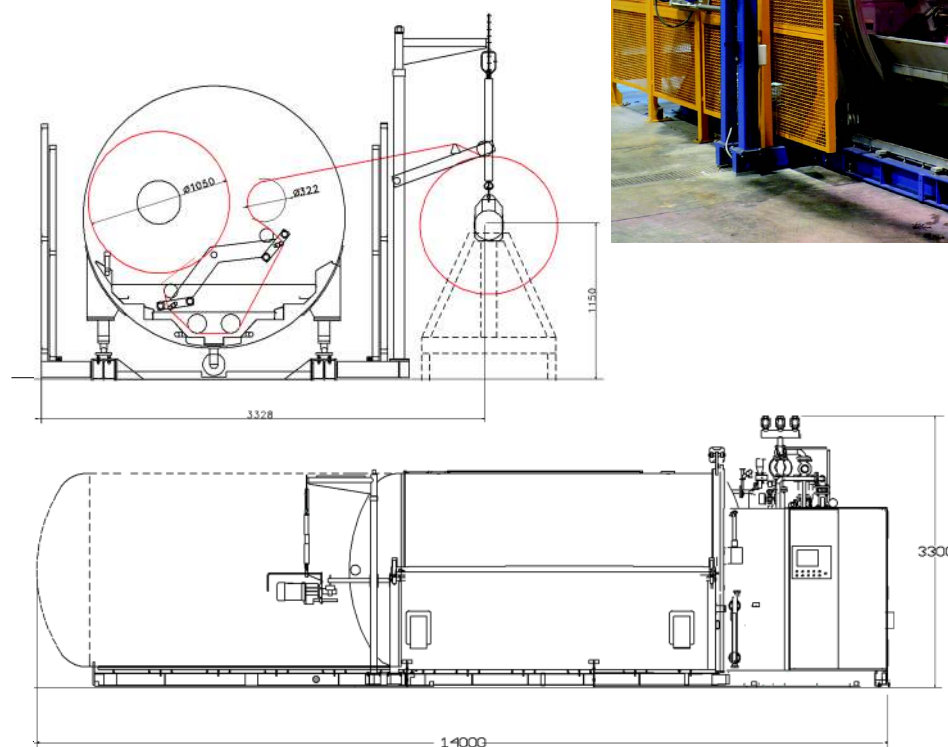
The dyeing quality is blended with totally safe high temperature operation up to 143°C.

The jigger is equipped with two electric motors with variable speed independently controlled by vectorial inverters. The tension value applied on the fabric is controlled by the two synchronized motors through encoder and mathematical models on the PLC.

The real fabric tension value during production is checked by the load cell, located in one of the two cylinders at the bottom of the tank.

The swing-levers have been designed to obtain crease-free dyeing in even the most delicate fabrics.

The tank, in stainless steel, and the operating methods have been designed to reach the highest washing efficiency. The jigger is equipped with an axial fabric unloading system. To make fabric winding easier without getting any folds or crease a device, made up of a fixed fabric-expanding bar and an idle guide roller, has been fitted onto the machine.





偉事達企業(中國)有限公司
WELL START ENTERPRISES(CHINA) LTD.

地址：中国上海市中山西路1800号兆丰环球大厦2楼G座
电话：86-21-6468 4466
传真：86-21-6440 0818
电子邮件：wsesha@sh163.net 邮编：200235
网址：www.wellstartchina.com

载荷能力 / *Loading capacity*

织物厚度 / *Fabric thickness (mm)*

克重 /Weightl (g/m2)		30-60	60-110	110-135	135-170	170-240	240-280	280-320	320-350	350-420	420-500	500-590
最大卷装直 径 Max Roll diameter (mm)		0,08	0,1	0,2	0,25	0,35	0,45	0,55	0,65	0,75	0,85	0,95
型 号 TYPE												
VGC-E	300	491	393	196	157	112	87	71	60	52	46	41
VGF-E	500	1930	1544	772	617	441	343					
CELSIUS 500	500	1930	1544	772	617	441	343					
VGO-E	800	5263	4210	2105	1684	1203	936	765	648	561		
CELSIUS 800	800	5263	4210	2105	1684	1203	963	765	648	561		
VGM-E	1050			3920	3136	2240	1742	1426	1206	1045	922	825
CELSIUS 1050	1050			3920	3136	2240	1742	1426	1206	1045	922	825
CELSIUS 1300	1300			6226	4981	3558	2767	2264	1916	1660	1465	1311
VGJ-E	1400				5689	4064	3161	2586	2188	1896	1673	1497

All the above data are given on an indicative basis are not technically binding for the product. Mezzera reserves the right to modify at any time and without prior notice, tha data and technical specifications published herein.

WE  REGGIANI



Reggiani美加尼：平网印花机、圆网印花机、数码印花机

Mezzera美赛拉：高温卷染机、退浆水洗机、牛仔布染色机、绳状水洗机

JMT耶高力：绞纱丝光机

MTS：空心锭子

RPR：加弹机、倍捻机