



# CONCORD

Trattamento in continuo di tessuti in corda  
*Continuous treatment for fabrics in rope form*

美加尼-美赛拉  
连续式绳状水洗机

WE  REGGIANI

纺织品改革先驱

# CONCORD 连续式绳状水洗机

织物由溢流方式运送, 因此无张力。不同的处理阶段有不同的处理温度。  
每个圆筒有单独的轧车。织物和逆流溶液之间高效转换。

和谐式绳状水洗机表现了绳状式水洗机织物、针织物水洗设备领域里最理想的进步。使用时明显增大箱体可减少水消耗以及限制废水污染。

鉴于现在市场对生产动态的高度重视, 和谐式代表了一种低消耗、高水洗效率以及极大的操作灵活性的紧密型机器, 特别适用于重量在50到 700 g/mi的织物。

鉴于美赛拉公司多年在织物水洗设备上的设计以及制造经验的成果, 这种创新型的设备对于人造、合成纤维织物前处理是最理想的。丝光或者苛化作用之后的中和处理, 织物的松弛处理, 莱卡织物的处理以及丝光、染色、印花之后的水洗处理。

和谐式引领市场已有很多年, 已经无可否认地证明了销售的成功。在灵活性和质量保证方面, 它代表了绳状式水洗的一种技术革命 (当我们推出Niagara模型时, 美赛拉公司率先引进这种处理方法)。而且, 有了前辈们在这领域获得的经验, 这种和谐式对于平幅漂白和管状针织物, 都是可靠的。

完全由不锈钢制成, 和谐式包含有很多水槽 (8到16个), 可分成4~5个区。织物进料管的最新设计, 可达到更高的工作速度, 高达100m/min。

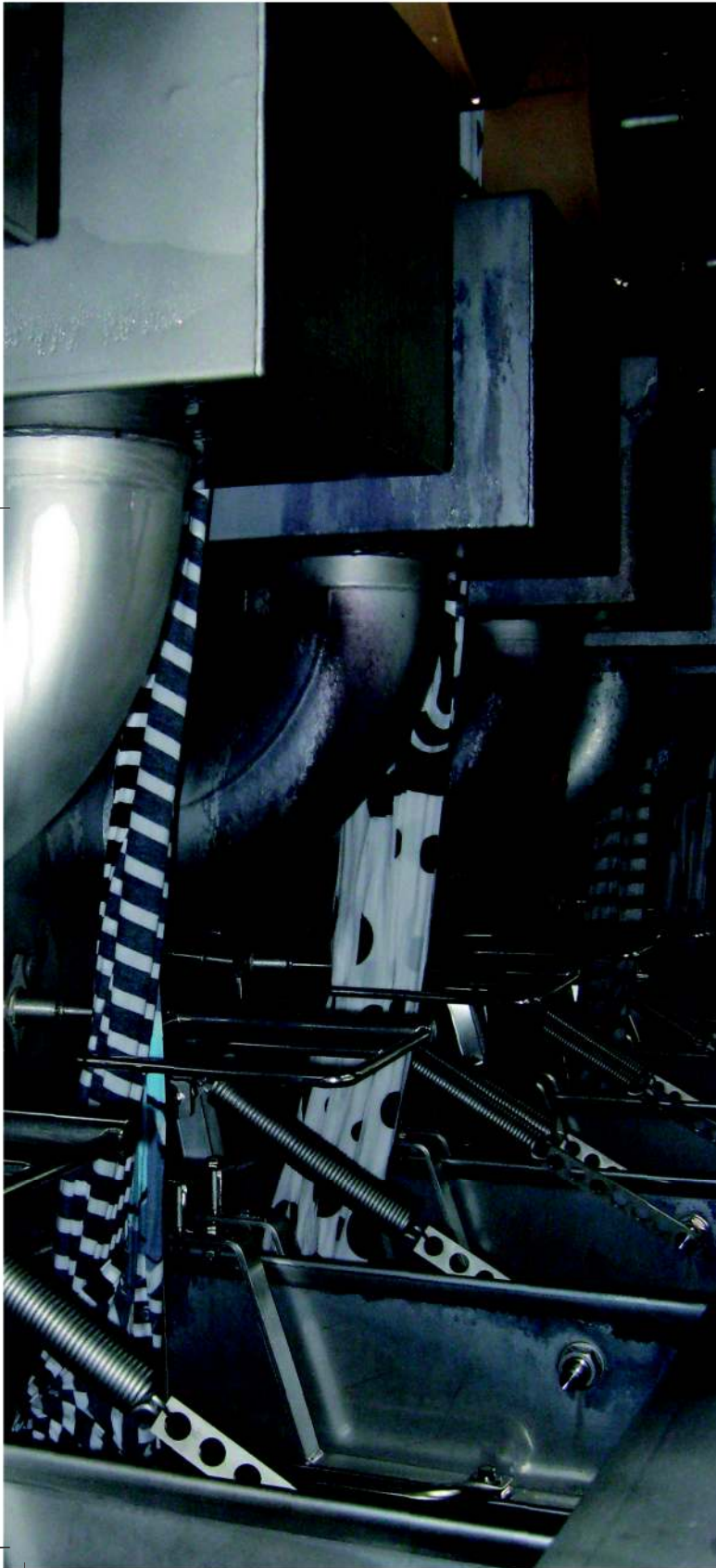
从技术层面来说, 依据客户的生产要求, 此设备可以分为四个或者五个部分。当从一个水槽移到下一个水槽时, 织物进行有效洗涤和挤压。这个工艺减少了废水污染, 同时加强了洗涤效果。溶液经过了相同部分的水槽之间的逆流流动, 很可能根据具体工艺需要从一个部分传送到另一部分。





# Continuous treatment for fabrics in rope form

**FABRIC IS TRANSPORTED BY OVERFLOW ACTION, THEREFORE TENSIONLESS DIFFERENT TEMPERATURE IN THE VARIOUS TREATMENT SECTIONS INDEPENDENT SQUEEZING MANGLE FOR EACH CHANNEL HIGH INTERCHANGE BETWEEN FABRIC AND COUNTER CURRENT LIQUOR**



The Concord represents the ideal improvement in the field of textile machines for the treatment of woven and knitted fabrics in rope form thanks to the reduced consumption and to the limited pollution due to waste waters.

The actual market situation greatly influences the production dynamics. Concord represents a compact machine with low consumption, high washing efficiency and great flexibility, especially for fabrics whose weight is between 50 and 700g/m<sup>2</sup>.

This innovative machine is the result of Mezzera great experience in designing and manufacturing machines for fabrics wet treatment. It is ideal for the pre-treatment of artificial and synthetic fibres, for the neutralising treatment of fabrics after mercerizing or caustification, for the relaxing treatment of fabrics, for the treatment of lycra items and for the after bleaching, dyeing and printing washing.

Concord is the market leader for many years, as testified by the indisputable sales success. In terms of flexibility and quality it represents a technological revolution in rope washing (Mezzera was the first to introduce this treatment when we launched the Niagara model). Furthermore, starting from the experience of our forerunners, Concord is reliable even for bleaching of plain and tubular knitted fabrics.

Concord, completely made of stainless steel, consists of a number of channels (8 to 16) which can be subdivided into 4/5 sections. Thanks to the new design of the fabric feed pipes, the machine can reach higher working speeds, up to 100 m/min.

From a technological point of view this machine can be divided into 4/5 sections according to the Customer production requirements. While moving from one channel to the next one, the fabric is efficiently washed and squeezed. This process reduces the polluting due to waste waters and at the same time improves the washing result. The liquor undergoes in counter-current flow between channels of the same section but it is possible to deliver liquor from one section to another according to specific technological requirements.





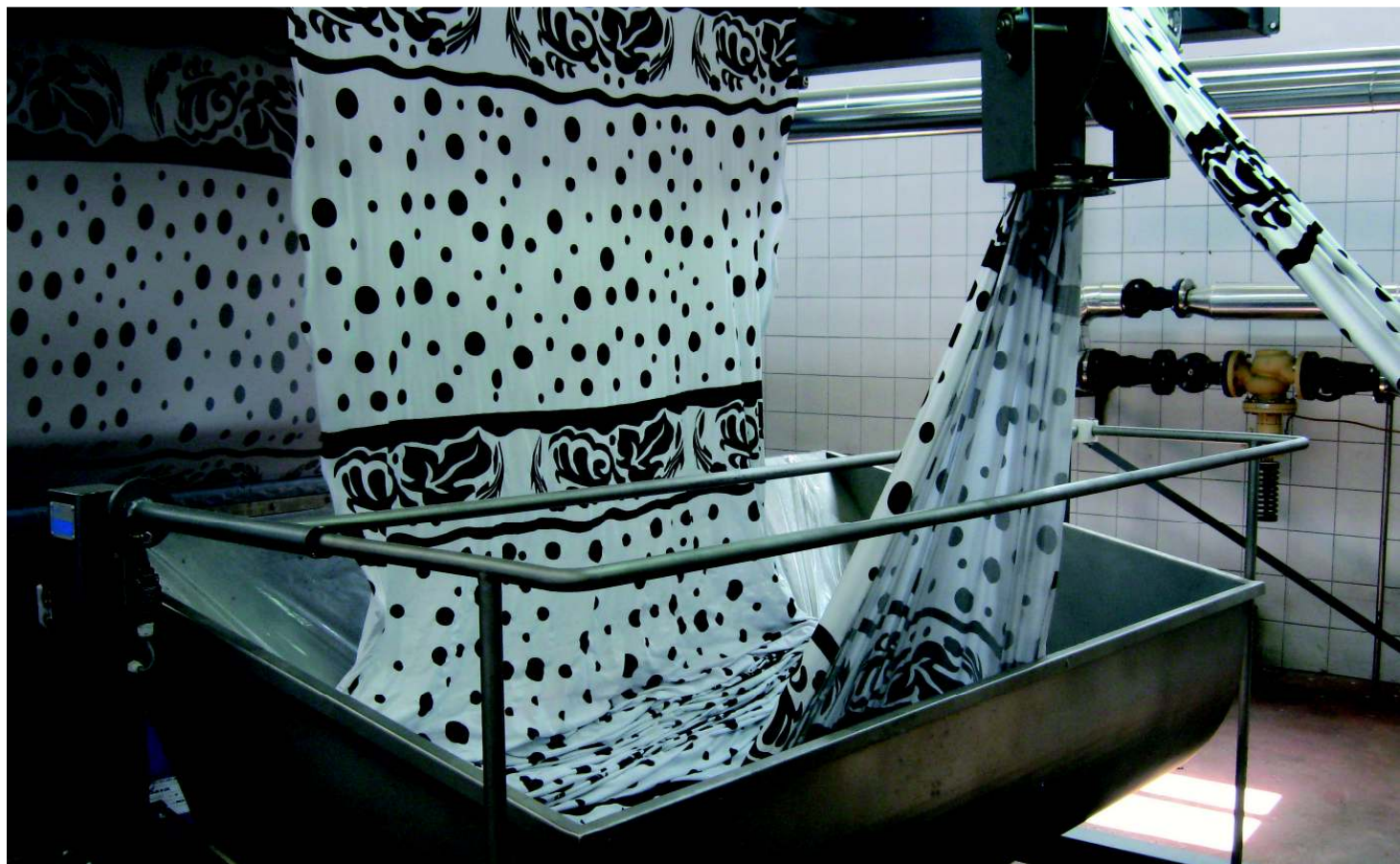
# CONCORD 连续式绳状水洗机

通过溢流系统，织物在液槽内稳定向前传送，浸渍在溶液中，完全松弛。每个部分都是独立的。每个水槽配备了自己的温度控制装置（最高工作温度高达98℃），水和化学物质进水阀，热交换器，循环泵和可交换过滤器。

压辊的新功能定位于去除织物滑移或纬纱开口的问题。驱动来自于独立变频器控制的交流电机，确保安全完美

的同步以及持续的速度调整。每个水槽有自身的控制单元保证织物的数量稳定，进而保证整批次相同的停留时间。每个水槽可容纳500L的液体和50kgs的织物。

和谐式水洗机的控制系统是基于最新技术的PLC，这保证了准确控制织物速度和加工参数，如水、化学物质，蒸汽量。



和谐式水洗机的特点是：

- 最高温度高达98℃
- 最高速度100 mt/min；平均速度 85mt/min
- 耗水量 4 ~ 12 L/kg
- 低能耗
- 液体和织物之间高效的交换
- 简单直观的操作系统可设置重要的操作参数
- 水洗槽自动添加化学物质
- 水洗槽为反向的织物运转装置
- 每个部分有伸缩液体水平调整机制
- 直接或间接蒸汽管都可加热液体
- 热回收系统

# Continuous treatment for fabrics in rope form



Features that make Concord a point of reference on the market:

- Maximum working temperature up to 98°C
- Maximum speed 100 mt/min; average production speed of 85 m/min
- Water consumption from 4 to 12 lt/Kg of treated fabric
- Low energy consumption
- Intense and efficient interchange between liquor and fabric
- Simple and intuitive control system to set up the operating parameters
- Automatic chemical dosage inside each channel
- Reverse fabric running device for each channel
- Telescopic liquor level adjustment mechanism per each channel/section
- Either direct or indirect steam can be used to heat the liquor
- Heat recovery system.

Thanks to the overflow transport system the fabric moves ahead constantly immersed in the liquor and totally tensionless. Each section is independent. Each channel is equipped with its own temperature control device (max working temperature 98°C), water and chemical-product inlet valves, heat exchanger, circulation pump and an interchangeable filter.

The new squeezing rollers are located in a new functional position to remove fabric-sliding or weft-opening problems. Drive comes from independent inverter-controlled a.c. motors to ensure perfect synchronisation and continuous speed adjustment without any risks. Each channel has its own control unit to keep constant the pre-set quantity of fabric, thus ensuring equivalent dwelling times for the whole batch. Each channel can hold 500 litres of liquor and up to 50 kgs of fabric.

The Concord control system is based on a state-of-the-art PLC which accurately controls the fabric speed and the treatment parameters such as water, chemical product and steam dosage.





# CONCORD 连续式绳状水洗机

和谐式水洗机技术上秉承了美赛拉公司一贯的坚固设计和制造系统。变频器控制驱动系统。织物通过逆流作用进行传输，自动控制和加工。完全不锈钢制造以及人体工学设计，所有这些特征都说明了生产一件易于操作，操作者容易理解，维修工容易维修的产品所作出的努力。

这项技术成果通过了绿色标签GREEN LABEL认证，通过测量处理过程中每千克织物CO2的释放量，代表了机器运行情况下实际的环境影响。这个标签修复了0，开启了提高技术和制造工艺，绝对尊重环境。每个人都应该遵循这样的趋势达到完美的效果。

## 和谐式CONCORD的新亮点 ReNOIR 的CONCORD设计

和谐式的新亮点起源于我们的数码印花机ReNOIR，其需要根据尺寸规格，生产量，终端产品质量提供合适的水洗线。

更多功能性，可持续性（新的绿色标签GREEN LABEL），减小尺寸，对数码印花产品的兼容性。和谐式的生产标准，降低了成本：新的数码和谐式的优点适合于小批量，高质量的要求。

数码和谐式获得了绿色标签GREEN LABEL认证。

The Concord meets the solid design and manufacturing traditions that have always characterized Mezzera. Thus the inverter-controlled drive system, fabric transportation by overflow action, automatic control of the process completely stainless steel manufacturing and the ergonomic design are all the features that testify the effort to produce a product easy to manage and accessible for the machine operator and the maintenance worker.

The concrete result of this technology is the acknowledgment of the GREEN LABEL which, by measuring the emission of CO2/Kg of fabric treated, represents the actual environmental impact of the machine in running conditions. This label fixes the 0 and starting point to improve technology and manufacturing processes in the absolute respect of environment, the trend everybody should follow to achieve the excellence.

## New CONCORD LIGHT The Concord designed by ReNOIR

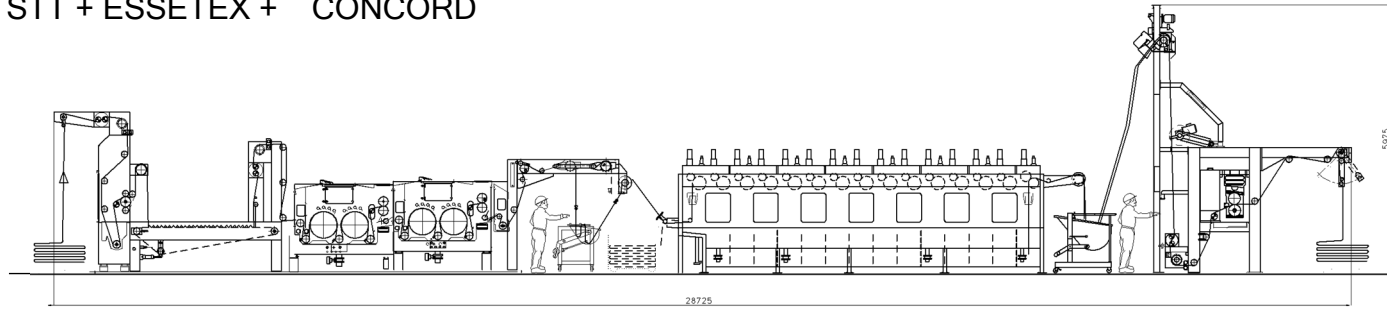
The new CONCORD LIGHT originates from our digital printing machine ReNOIR which requests an adequate washing line in terms of dimensions, production capacity, final quality.

Even more versatile, more and more sustainable (new GREEN LABEL), reduced dimensions, compatibility with digital production, CONCORD production standard, reduced investment: these are some of the advantages of the new DIGITAL CONCORD suitable even for small productions with top quality results. DIGITAL CONCORD obtained the acknowledgment of the GREEN LABEL.

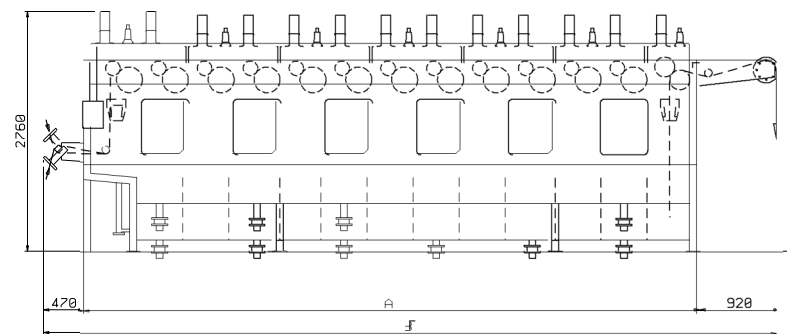


# Continuous treatment for fabrics in rope form

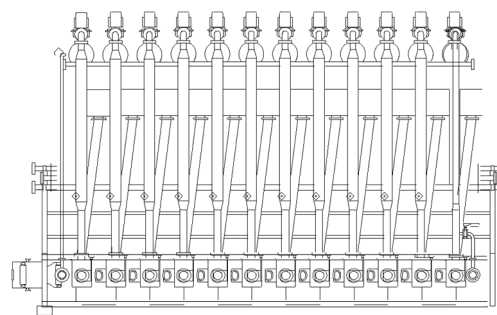
STT + ESSETEX + CONCORD



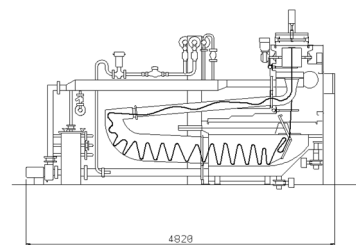
CONCORD12



正视图 / Front view



主视图 / Plan view



侧视图 / Section view



偉事達企業(中國)有限公司  
WELL START ENTERPRISES(CHINA) LTD.  
地址：中国上海市中山西路1800号兆丰环球大厦2楼G座  
电话：86-21-6468 4466  
传真：86-21-6440 0818  
电子邮件：wsesha@sh163.net 邮编：200235  
网址：www.wellstartchina.com

技术数据 / *Technical data*

水槽 CHANNELS	长度 LENGHT (A) mm	装机功率 (Kw) INSTALLED POWER (Kw)
8	6320	26
10	7380	32
12	8440	38
14	9600	44
16	10560	50

WE  REGGIANI



Reggiani美加尼：平网印花机、圆网印花机、数码印花机  
Mezzera美赛拉：高温卷染机、退浆水洗机、牛仔布染色机、绳状水洗机  
JMT耶高力：绞纱丝光机  
MTS：空心锭子  
RPR：加弹机、倍捻机